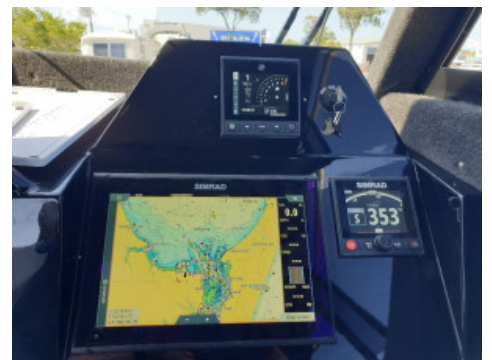




2024 Yellowfin 7600 Platinum Southerner HT Mercury Pro Xs V8-200hp

\$131,990.00



Specifications

Boat Details

Price	\$131,990.00	Boat Brand	YELLOWFIN
Model	7600 Southerner HT	Length	7.60
Year	2024	Category	Aluminium Boats
Hull Style	Single	Hull Type	Aluminium
Power Type	Power	Stock Number	YF7600STH
Condition	New	State	Queensland
Suburb	PIALBA	Engine Make	Mercury

Disclaimer

Our company offers the details of this vessel in good faith but cannot guarantee or warrant the accuracy of this information nor warrant the condition of the vessel. A buyer should instruct his agents and/or surveyors to investigate such details buyer desires validated. This vessel is offered subject to prior sale, price change or withdrawal without notice.



Phone: 07 4128 9944

Email: sales@baycitymarine.com.au

57 Islander Road Pialba QLD 4655

Description

Yellowfin 7600 Southerner HT Mercury V8-200hp Alloy I-Beam Trailer

This is your opportunity to get on the water in what is arguably one of the best plate Alloy 7.6m Hard Tops money Can buy all for a price that is refreshingly competitive.

About the only way to improve your Yellowfin 7600 Experience is to power it with an outboard that has essentially reset all known benchmarks for engine performance, weight and reliability or in other words an outboard that will enable what can only be described an instantaneous hole shot essential for safe bar crossings and genuinely effortless cruising that easily surpasses any other 200hp outboard available.

This maybe a standard white Yellowfin Southerner HT but the fact is even in standard spec these boats have many features that are options on others and when combined with its 4.6L V8 200hp Mercury and Alloy I-Beam trailer this boat represents significant value compared to most and gives you the ability to get on the water for less in a boat that is a whole lot more than most!

In fact this boat will enable you to option and fit to your liking over time and in a budget that works for you.

Powered by the INDUSTRY LEADING MERCURY 4.6 LITRE 200HP V8 all at the advertised price is quite simply extraordinary redefining new boat value for money

Plus with our Mercury finance options you could be out there living the dream just call to find out what we can do for you.

How do you make one of the best 7m Plate alloy Hard top Boats even better?

The answer is extraordinarily simple all you have to is bolt on a Mercury 4.6-litre V8 outboard and boom you have just created what is quite possibly one of the most fun and capable 7.0m boats on the Market full stop.

If you want a boat with Premium Offshore Ability and True Bar Crushing Capability That is only limited by your own skill and adventure level then this Boat, Motor and Trailer Package deserves to be at the top of your List!

Yellowfin has always been known for being a quality product and these latest generation boats are quite simply superb from the 6mm thick plate alloy hull and transom to the solid glass windscreen and sliding side glass windows, magnificent hard top, True self draining deck, with a dance room of space for fishing.

Feature packed for fishing with more rod holders than your local BCF and all of the must haves like Live bait tank and transom door plus two very comfortable almost lounge like chairs under the hard top and this boat just keeps getting better.

What do you Get in this package?

1 x Painted Hull with All Standard Southerner Hard top features that include the latest Zipwake auto trim tab system PLUS Mercury 4.6 Litre Pro XS 200hp V8, Mercury with Vessel view Link and premium Mercury concealed control box, Stainless Steel Prop with all your engine data displayed on the included Lowrance FS 9 Dual Marine AGM type

Disclaimer

Our company offers the details of this vessel in good faith but cannot guarantee or warrant the accuracy of this information nor warrant the condition of the vessel. A buyer should instruct his agents and/or surveyors to investigate such details buyer desires validated. This vessel is offered subject to prior sale, price change or withdrawal without notice.



Phone: 07 4128 9944

Email: sales@baycitymarine.com.au

57 Islander Road Pialba QLD 4655

Batteries, Burley Bucket Cabin Cushions, Cabin Backrest, Cabin Carpeted Lining, Deck Wash, Radio GX750B VHF, 4ft Whip BLACK, LED Light Kit Yellowfin Hard Top Cabin, Rear Dive Ladder 3 Step, Rear Lounge 3/4, Rear Backrest 3/4, Sinkers S.S. (2), Spare Wheel & Carrier YFin 14" Black Alloy, Spare Wheel Cover, Transom Cutting Board, Yes we include 12 months QLD registration for the hull and trailer if required.

Full roller drive on Aluminium I-Beam 2750 ATM with Alko iQ 7 Electric brake away brake system puts this trailer at the top of the list for longevity, Quality, and genuine drive on ability right down to the factory fitted boat catch, Plus and a massive plus is the trailer not only tows beautifully but support the boat incredibly well and that is perfect if you want to do some big miles in chase of that perfect or remote fishing location!

Some fast facts gained through actual on water experience in these boats.

How Does It Ride? The ride is about as good as it gets in alloy! Arguably not just better than most but substantially better.

How Does It Compare to Fiberglass? Well lets just say that this tin boat more than holds its own! The reality is the 6mm Thick Alloy Hull combined with its 19degree deadrise 2.4m beam and foam filled hull provides an extraordinarily good ride! So the short answer is yes glass like ride with Tin practicality!

Is It Quiet On The Water? Simple answer is a solid yes a lot more so than a lot of glass boats plus and a massive plus not only does it have an extraordinary ride but it also maintains excellent stability at rest and the best part is because it has so much weight nice and low you don't need to flood the keel and I like the idea of keeping water out of my boat!

What makes that Mercury V8 so good? The answers are numerous from simple Mathematics to good old fashioned Aural pleasure however its hard to hide from the fact that it weighs a meagre 229kg and has 4572cc of cubic displacement and a suite of the latest features that enable it to produce blistering performance from Zero to Hero plus incredible economy and it just looks good, is backed by a Mercury 6 year Warranty and the list goes on. And yes, I have had the pleasure numerous times on different boats with these V8 engines and yes, they are the real deal with nothing else remotely close. As the old saying goes there is no replacement for displacement

Combined with our Mercury finance options you could be out there living the dream just call to find out what we can do for you.

For More information Please call the team.

Do You finance?

Yes, we Finance, our Accredited Business Managers can provide approved customers with customised on-the-spot finance and insurance solutions.

How do I know that I am not buying a defective Boat?

Our boats have an Extensive 100 Point Safety Check performed on them and come with a Clear Title that means you are not buying a Written Off, Stolen or Damaged boat or engine.

Does This Boat qualify for an optional Australia Wide Marine specific used boat warranty?

Yes, this boat qualifies for an optional National Marine Warranty for up to 5 years giving you even more peace of mind(Please do not hesitate to ask for details on this product)

Why should you buy this Boat from us?

There are many dealers on the Internet offering many great deals however our company was established for over 28

Disclaimer

Our company offers the details of this vessel in good faith but cannot guarantee or warrant the accuracy of this information nor warrant the condition of the vessel. A buyer should instruct his agents and/or surveyors to investigate such details buyer desires validated. This vessel is offered subject to prior sale, price change or withdrawal without notice.



Phone: 07 4128 9944

Email: sales@baycitymarine.com.au

57 Islander Road Pialba QLD 4655

years and as such we have built our success over the years on a foundation of excellence in customer service which forms part of our staff charter. Our Customer first approach has and always will be the cornerstone of our success. We work on the philosophy of we do what we say we will do

We are your premier dealer for Quintrex and Revival Boats, Honda and Mercury engines on the Fraser Coast, Queensland. Only a few hours' drive from Brisbane and the Sunshine Coast. If you have not found what you are looking for in the new boat range we have a vast stock of quality used vessels at great prices. We can transport Australia wide. • and every effort is made to make sure all provided information is true and correct at time of advertisement generation however mistakes, errors inclusive of information from third party sources can occur accordingly Bay City Marine do not accept any liability for an error or mistake in or any advertisement and or details.

Features

Number Of Engines	1
Stroke	4 Stroke EFI
Engine Hours	0
Horse Power (hp)	200
Drive Type	Outboard
Fuel Tank Capacity (L)	380
Propeller	Stainless Steel
Steering System	Hydraulic
Number of Berths	2
Bilge Pump	Auto / Manual
Electrics	Dual Batteries
Has Navigation Lights	Yes
Radio	VHF

Engine Details

Engine Make	Mercury
Displacement	4572
Horse Power	200
Fuel Type	Petrol
Drive Type	8
Propeller	Stainless

Disclaimer

Our company offers the details of this vessel in good faith but cannot guarantee or warrant the accuracy of this information nor warrant the condition of the vessel. A buyer should instruct his agents and/or surveyors to investigate such details buyer desires validated. This vessel is offered subject to prior sale, price change or withdrawal without notice.